

# FLOODLIGHTS FOOTBALL LED 400

EN



IP66

IK08

RG0



220-240V  
50-60Hz



## GENERAL CHARACTERISTICS

APPLICATION	Floodlights
FIXING	Bracket with tilt adjustment goniometer
POWER W	161-400
FLUX Lm Out (min-max)	20800-61000
LED RANGE	S:96-AS:144
COLOR TEMPERATURE	4000K-5000K-5700K-RGBW
IRC	>70
INSULATION CLASS	I
DEGREE OF PROTECTION	IP66
MECHANICAL RESISTANCE	IK08
BODY	Body and frame in die-cast aluminium, polyester powder coated.
COLOR	GREY RAL 7016
GASKET	Silicone.
SCREEN	4 mm thick tempered protective glass.
WEIGHT Max (Kg)	10.5
POWER SUPPLY UNIT	Power unit placed remotely at a maximum distance of 200m (SB version) or mounted on the body of the appliance on stainless steel plates (AND, AFD, ADA versions).
POWER SUPPLY	220÷240V 50/60Hz cos φ 0.95.
DRIVER PRESUMED LIFE	100.000h @ Tc life.
OVERVOLTAGE PROTECTION	Solutions with alim. on board protected with SPD placed in the junction box, or in the power supply for remote driver solution. Protected module with equipotential network. Discharge immunity level >10kV both common and differential mode.
CONNECTION	Watertight protection box located on the bracket of the appliance and equipped with a 4.0mm <sup>2</sup> terminal block and M20 cable gland for 400W and M25 for 800-1200W.

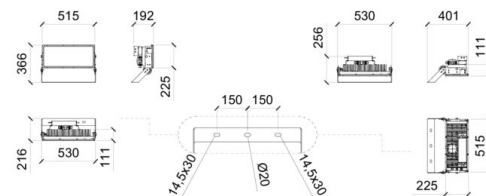
## LED MODULE

EFFICIENCY	185 lm/W
LED USEFUL LIFE	> 100.000h L90B10.
SECONDARY OPTICS	S: Stabilized PMMA. AS: anodized aluminum reflector.

## DIMENSIONS

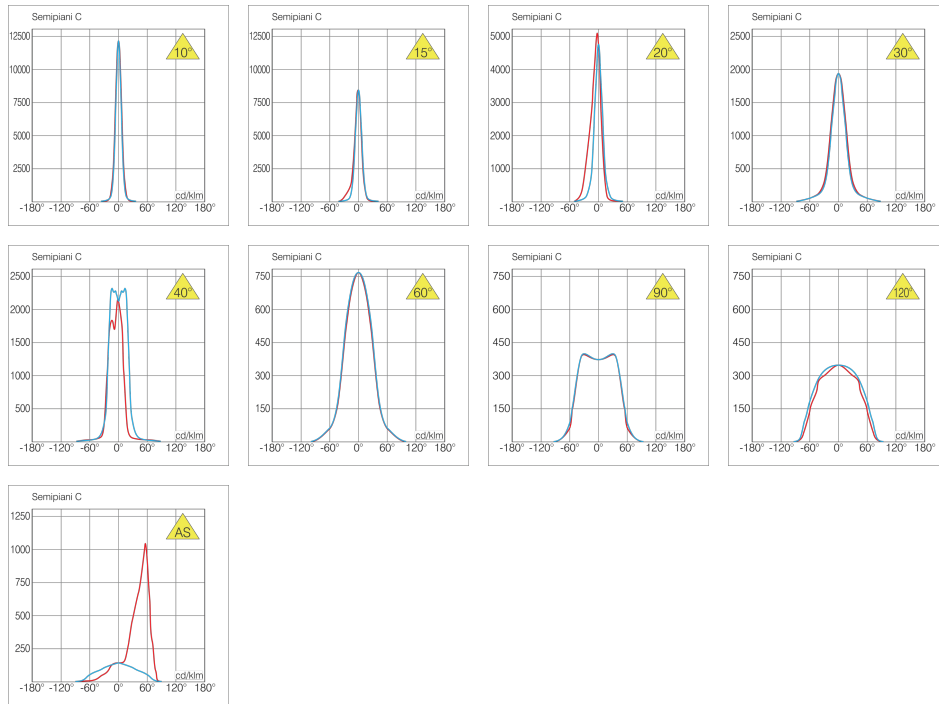
FOOTBALL LED S

FOOTBALL LED AS



**PHOTOMETRY**

Final code	Optical
1	10°
7	15°
2	20°
3	30°
4	40°
6	60°
9	90°
0	120°
A	AS



**DIMMINGS**

	Rset	Switch	Bipower	1-10V	Dali	CLO	Crono timer	Mains dim	Radio Waves	Conveyed Waves	Zhaga socket	Nema 7Pins	Bluetooth
<b>AFD</b>	/	/	/	/	/	S*	S*	/	/	/	/	/	/
<b>AND</b>	/	/	/	/	/	/	/	/	/	/	/	/	/
<b>ADA</b>	/	/	/	/	S*	/	/	/	/	/	/	/	/

**SB** Remote power supply. Dimming options on request.

S\* Standard with programming to be carried out in the company.

**IDENTIFICATION DATA (Standard Code)**

Dimm	Kelvin	Photom	Code	Name	CL	Watt	mA	Lumen In	Lumen Out	Efficiency (Lm/W)	IPEA
AND	4000K	10°	0047914441AND	FOOTBALL LED S 400W 4K 10°	I	200,0	700	34100	30000	150	A9+2
						300,0	1050	49050	43150	144	A6+1,8
						400,0	1400	62650	55000	138	A6+1,72
AND	4000K	15°	0047914447AND	FOOTBALL LED S 400W 4K 15°	I	200,0	700	34100	30000	150	A9+2
						300,0	1050	49050	43150	144	A6+1,8
						400,0	1400	62650	55000	138	A6+1,72
AND	4000K	20°	0047914442AND	FOOTBALL LED S 400W 4K 20°	I	200,0	700	34100	30000	150	A9+2
						300,0	1050	49050	43150	144	A6+1,8
						400,0	1400	62650	55000	138	A6+1,72
AND	4000K	30°	0047914443AND	FOOTBALL LED S 400W 4K 30°	I	200,0	700	34100	30000	150	A9+2
						300,0	1050	49050	43150	144	A6+1,8
						400,0	1400	62650	55000	138	A6+1,72
AND	4000K	40°	0047914444AND	FOOTBALL LED S 400W 4K 40°	I	200,0	700	34100	30000	150	A9+2
						300,0	1050	49050	43150	144	A6+1,8
						400,0	1400	62650	55000	138	A6+1,72
AND	4000K	60°	0047914446AND	FOOTBALL LED S 400W 4K 60°	I	200,0	700	34100	30000	150	A9+2
						300,0	1050	49050	43150	144	A6+1,8
						400,0	1400	62650	55000	138	A6+1,72
AND	4000K	90°	0047914449AND	FOOTBALL LED S 400W 4K 90°	I	200,0	700	34100	30000	150	A9+2
						300,0	1050	49050	43150	144	A6+1,8
						400,0	1400	62650	55000	138	A6+1,72
AND	4000K	120°	0047914440AND	FOOTBALL LED S 400W 4K 120°	I	200,0	700	34100	30000	150	A9+2
						300,0	1050	49050	43150	144	A6+1,8
						400,0	1400	62650	55000	138	A6+1,72
AND	4000K	AS	004811444AAND	FOOTBALL LED AS 400W 4K AS	I	161,0	400	30575	24200	150	A9+2,09
						292,0	700	53075	42000	144	A6+1,8
						400,0	950	72025	57000	143	A6+1,78

Dimm	Kelvin	Photom	Code	Name	CL	Watt	mA	Lumen In	Lumen Out	Efficiency (Lm/W)	IPEA
AFD	4000K	10°	0047914441AFD	FOOTBALL LED S 400W 4K 10°	I	200,0	700	34100	30000	150	A9+2
						300,0	1050	49050	43150	144	A6+1,8
						400,0	1400	62650	55000	138	A6+1,72
AFD	4000K	15°	0047914447AFD	FOOTBALL LED S 400W 4K 15°	I	200,0	700	34100	30000	150	A9+2
						300,0	1050	49050	43150	144	A6+1,8
						400,0	1400	62650	55000	138	A6+1,72
AFD	4000K	20°	0047914442AFD	FOOTBALL LED S 400W 4K 20°	I	200,0	700	34100	30000	150	A9+2
						300,0	1050	49050	43150	144	A6+1,8
						400,0	1400	62650	55000	138	A6+1,72
AFD	4000K	30°	0047914443AFD	FOOTBALL LED S 400W 4K 30°	I	200,0	700	34100	30000	150	A9+2
						300,0	1050	49050	43150	144	A6+1,8
						400,0	1400	62650	55000	138	A6+1,72
AFD	4000K	40°	0047914444AFD	FOOTBALL LED S 400W 4K 40°	I	200,0	700	34100	30000	150	A9+2
						300,0	1050	49050	43150	144	A6+1,8
						400,0	1400	62650	55000	138	A6+1,72
AFD	4000K	60°	0047914446AFD	FOOTBALL LED S 400W 4K 60°	I	200,0	700	34100	30000	150	A9+2
						300,0	1050	49050	43150	144	A6+1,8
						400,0	1400	62650	55000	138	A6+1,72
AFD	4000K	90°	0047914449AFD	FOOTBALL LED S 400W 4K 90°	I	200,0	700	34100	30000	150	A9+2
						300,0	1050	49050	43150	144	A6+1,8
						400,0	1400	62650	55000	138	A6+1,72
AFD	4000K	120°	0047914440AFD	FOOTBALL LED S 400W 4K 120°	I	200,0	700	34100	30000	150	A9+2
						300,0	1050	49050	43150	144	A6+1,8
						400,0	1400	62650	55000	138	A6+1,72
AFD	4000K	AS	004811444AAFD	FOOTBALL LED AS 400W 4K AS	I	161,0	400	30575	24200	150	A9+2,09
						292,0	700	53075	42000	144	A6+1,8
						400,0	950	72025	57000	143	A6+1,78
ADA	4000K	10°	0047914441ADA	FOOTBALL LED S 400W 4K 10°	I	200,0	700	34100	30000	150	A9+2
						300,0	1050	49050	43150	144	A6+1,8
						400,0	1400	62650	55000	138	A6+1,72
ADA	4000K	15°	0047914447ADA	FOOTBALL LED S 400W 4K 15°	I	200,0	700	34100	30000	150	A9+2
						300,0	1050	49050	43150	144	A6+1,8
						400,0	1400	62650	55000	138	A6+1,72
ADA	4000K	20°	0047914442ADA	FOOTBALL LED S 400W 4K 20°	I	200,0	700	34100	30000	150	A9+2
						300,0	1050	49050	43150	144	A6+1,8
						400,0	1400	62650	55000	138	A6+1,72
ADA	4000K	30°	0047914443ADA	FOOTBALL LED S 400W 4K 30°	I	200,0	700	34100	30000	150	A9+2
						300,0	1050	49050	43150	144	A6+1,8
						400,0	1400	62650	55000	138	A6+1,72
ADA	4000K	40°	0047914444ADA	FOOTBALL LED S 400W 4K 40°	I	200,0	700	34100	30000	150	A9+2
						300,0	1050	49050	43150	144	A6+1,8
						400,0	1400	62650	55000	138	A6+1,72
ADA	4000K	60°	0047914446ADA	FOOTBALL LED S 400W 4K 60°	I	200,0	700	34100	30000	150	A9+2
						300,0	1050	49050	43150	144	A6+1,8
						400,0	1400	62650	55000	138	A6+1,72
ADA	4000K	90°	0047914449ADA	FOOTBALL LED S 400W 4K 90°	I	200,0	700	34100	30000	150	A9+2
						300,0	1050	49050	43150	144	A6+1,8
						400,0	1400	62650	55000	138	A6+1,72
ADA	4000K	120°	0047914440ADA	FOOTBALL LED S 400W 4K 120°	I	200,0	700	34100	30000	150	A9+2
						300,0	1050	49050	43150	144	A6+1,8
						400,0	1400	62650	55000	138	A6+1,72
ADA	4000K	AS	004811444AADA	FOOTBALL LED AS 400W 4K AS	I	161,0	400	30575	24200	150	A9+2,09
						292,0	700	53075	42000	144	A6+1,8
						400,0	950	72025	57000	143	A6+1,78
SB	4000K	10°	0047914441SB	FOOTBALL LED S 400W 4K 10°	I	200,0	700	34100	30000	150	A9+2
						300,0	1050	49050	43150	144	A6+1,8
						400,0	1400	62650	55000	138	A6+1,72
SB	4000K	15°	0047914447SB	FOOTBALL LED S 400W 4K 15°	I	200,0	700	34100	30000	150	A9+2
						300,0	1050	49050	43150	144	A6+1,8
						400,0	1400	62650	55000	138	A6+1,72

Dimm	Kelvin	Photom	Code	Name	CL	Watt	mA	Lumen In	Lumen Out	Efficiency (Lm/W)	IPEA
SB	4000K	20°	0047914442SB	FOOTBALL LED S 400W 4K 20°	I	200,0	700	34100	30000	150	A9+2
						300,0	1050	49050	43150	144	A6+1,8
						400,0	1400	62650	55000	138	A6+1,72
SB	4000K	30°	0047914443SB	FOOTBALL LED S 400W 4K 30°	I	200,0	700	34100	30000	150	A9+2
						300,0	1050	49050	43150	144	A6+1,8
						400,0	1400	62650	55000	138	A6+1,72
SB	4000K	40°	0047914444SB	FOOTBALL LED S 400W 4K 40°	I	200,0	700	34100	30000	150	A9+2
						300,0	1050	49050	43150	144	A6+1,8
						400,0	1400	62650	55000	138	A6+1,72
SB	4000K	60°	0047914446SB	FOOTBALL LED S 400W 4K 60°	I	200,0	700	34100	30000	150	A9+2
						300,0	1050	49050	43150	144	A6+1,8
						400,0	1400	62650	55000	138	A6+1,72
SB	4000K	90°	0047914449SB	FOOTBALL LED S 400W 4K 90°	I	200,0	700	34100	30000	150	A9+2
						300,0	1050	49050	43150	144	A6+1,8
						400,0	1400	62650	55000	138	A6+1,72
SB	4000K	120°	0047914440SB	FOOTBALL LED S 400W 4K 120°	I	200,0	700	34100	30000	150	A9+2
						300,0	1050	49050	43150	144	A6+1,8
						400,0	1400	62650	55000	138	A6+1,72
SB	4000K	AS	004811444ASB	FOOTBALL LED AS 400W 4K AS	I	161,0	400	30575	24200	150	A9+2,09
						292,0	700	53075	42000	144	A6+1,8
						400,0	950	72025	57000	143	A6+1,78

To receive an offer on other available solutions, contact [estero@faeber.com](mailto:estero@faeber.com)

The values given are nominal values. Luminous flux tolerance +/-7%, power tolerance +/-10%.

OPTIONAL ACCESSORIES



000063479

SYMMETRICAL FOOTBALL LED DEFLECTOR

000063478

ASYMMETRICAL 15° FOOTBALL LED BAFFLE



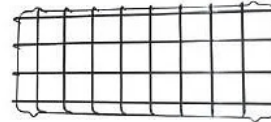
000090723

LASER POINTER + MOUNTING BRACKET



000090724

OPTICAL POINTER + MOUNTING BRACKET



000034068

ANTI-SHOCK GRID